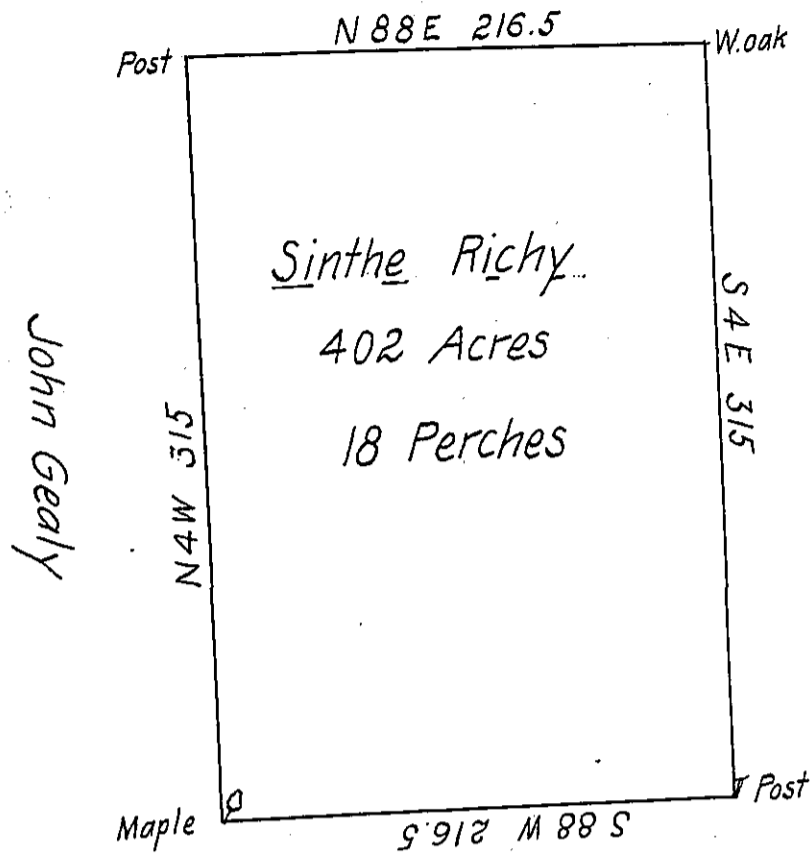


once Tho<sup>s</sup> Graham now  
Samuel Anderson



Scale  
100 perches  
to an Inch

C 134-289

Philip Horn

C 101-16-50

Situate in Wolf Creek Township Mercer County Containing  
402 Acres 18 perches and usual allowance Surveyed Jan<sup>y</sup>  
19<sup>th</sup>. 1837 for Sinthe Richy at the request of Alexander  
Hays In pursuant of an actual Settlement commenced in  
1798

Jan<sup>y</sup> 26<sup>th</sup> 1837

B. Alexander D.S.

John Taylor, Esq<sup>r</sup>, S.G.

IN TESTIMONY that the above is a copy of the original remaining on file in  
the Department of Internal Affairs of Pennsylvania, made  
conformably to an Act of Assembly approved the 16th day of  
February, 1833, I have hereunto set my Hand and caused  
the Seal of said Department to be affixed at Harrisburg,  
this 25<sup>th</sup> day of August 1906.

*Isaac P. Brown*  
Secretary of Internal Affairs.